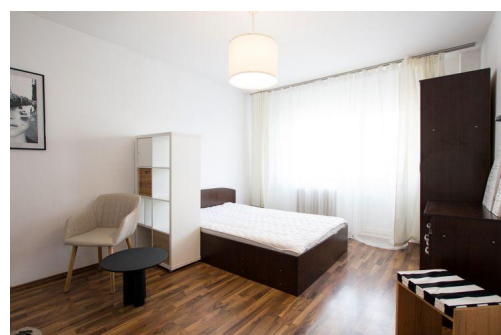


Rent 2 rooms apartment | Generous, Ideal 2 people, Park | Tineretului

**520 € / month**



- 2 rooms
- Separated
- Construction year: 1979
- 1 bedrooms; 1 bathrooms;
- Floor: 7 / G+8F
- Facing: South-East
- Covered area: 52 sqm

Open view, plenty of nature light, a generous area, proximity to the park and an ideal space for 2 people; Here are some of the features of this 2 rooms apartment that we propose for rent in the area of Youth - Pисcului.

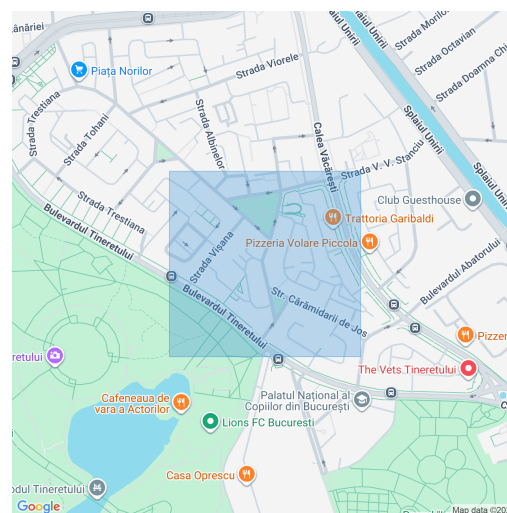
The property in the useful area of 52sqm is detached, being located on the 7th floor of an 8-storey building completed in 1979.

From a functional point of view, choosing this apartment you will have at your disposal an access vestibule, 2 individual rooms positioned diametrically opposite - equipped with bedroom furniture, a generous closed kitchen (furnished and equipped) provided with an additional storage space (room), a storage space of type closet and a bathroom provided with bathtub.

The area in which the apartment is located is recognized for the community of quality, accessibility (5 minutes walk to metro Youth, 10 minutes walk to Unirii Square), fresh air (proximity to 2 parks: Youth, Carol) and everything you need (faculties Titu Maiorescu, Titulescu, Cantemir, quality schools, high school, shops).

<http://www.realt.ro/rebs/3052073/>

### Location:



**Cristina Stoianovici**  
CEO, EXECUTIVE PARTNER |  
REALTOR

**0724263220**  
cristina@realt.ro

**Photos**

